



JANUARY/FEBRUARY



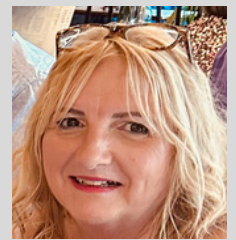
NEWSLETTER

An impressive start to 2024

Here is the first newsletter of 2024! All of the staff team at Freshfield would like to offer a very warm welcome to our new children and families who have joined us this term, as well as a “welcome back” to the rest of the children.

We have been really impressed with just how quickly all of the children settled at the start of this term. We were particularly impressed by those children that have recently joined Freshfield.

A huge well done to you all. Liz Richardson - Headteacher



New Staff Members



Jacqui Haywood

Key worker
Dragonflies



Mary Warsop

Key worker
Fireflies



Chloe Smedley

Key worker
2's Unit

Many of you will be signed up to & checking your Tapestry App/account regularly to receive photos and messages about your child. We try to post at least once per week.



You are welcome to comment on the information shared with you by staff. Please remember that you can upload photographs and comments about what activities your child gets up to at home on Tapestry. Staff love reading your messages, and talking to the children about the things that they have done or the places that that your child has visited. Staff will talk to your child about the photographs of key people in your child's life. Staff also love reading about any achievements that your child has celebrated. This can be any challenge that your child has overcome no matter how big or small. It could be being able to put their coat on, sleeping in their own bed, trying a new food, building a Lego model or achievements at gymnastics, swimming, ballet or football etc

D I V E R S I T Y
E Q U I T Y
I N C L U S I O N



Without exception, every child at Freshfield Nursery School is valued. We recognise that every child is unique, therefore we endeavour to empower our children and provide them with opportunities to develop and flourish irrespective of their individual learning needs, stage of development, starting points or special educational needs. We are committed to discovering and supporting the individual potential of every child and we aim to provide teaching and learning experiences that are exciting and fun for everyone at our school. This is done in consultation with the Special Educational Needs and Disabilities Code of Practice (2014), The Equality Act (2010), The Children and Families Act (2014) and correlating school policies.

If you are worried about your child at all please speak with your child's group leader, our Inclusion and Early Years Leader Miss Nikki Simcock or our Co-Headteacher Mrs Liz Richardson.

Inclusion Leader & SENDCo - Miss Nikki Simcock
Contact through email at admin@freshfield.stockport.sch.uk
or telephone telephone our admin office on 0161 442 6944

WE ARE ALWAYS HERE TO LISTEN - EVERY CHILD MATTERS

Communication & Language

Communication and language is one of the seven areas of the early years foundation stage and is used to assess children's ability to speak, pay attention, listen and understand. Children do this in range of ways including, listening to stories, responding appropriately to what people say, by articulating and expressing their feelings and developing their own narratives and connecting ideas or events.

Tiny Happy People is a BBC website designed to help develop your child's language and communication skills. There are lots of simple activities and ideas that the whole family can join in with for more information please visit <https://www.bbc.co.uk/tiny-happy-people>

Language processing plays a crucial role in cognitive development, shaping our ability to think & communicate. As children learn to communicate through speech & language, they develop the ability to think, reason & problem-solve. Research has shown that children exposed to a rich language environment from an early age perform better on cognitive tasks in life.

OBSERVATION OF PLAY & LEARNING (OP&L)

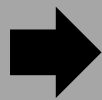
Each child's learning is closely monitored in collaboration with parents/carers to ensure your child is supported to reach significant milestones for their age.

OP&L works on the basis of having six-monthly child developmental milestones, which we use to monitor children's development. These milestones reflect what we believe a 'typical' child, should be able to achieve. We know that not all children will have 'typical' development. OP&L allows us to tell & celebrate each child's story and focus on the support they need from us.

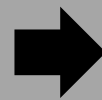
The observations and assessments that we make are called 'spotlights'. We observe children's innovation, their creativity, their ideas, their intents & feelings. The insight that we gain enables us to discuss, reflect & plan our environment to support and shape future learning.

OP&L follows a simple, three step cycle:

OP&L
SPOTLIGHT



MEET WITH
PARENT



REVIEW AND
REFLECT

Settling in: Soon after your child has started nursery, we will offer you the opportunity to discuss how your child has settled in and discuss our ways of observing children. We will look at the child development milestones together.

Spotlight: Each child will have two 'spotlight' points in the year. We will share the spotlight and talk to you about your child's learning and development.

Chinese
New
Year



WHAT HAVE WE BEEN DISCOVERING & TALKING ABOUT?



Snow play



Making homes

for our animal friends

friends



RSPB Big Schools' Birdwatch 2024



Building nests

Bird spotting



Outdoor challenges



LOOK OUT FOR FUTURE DIARY DATES & EVENTS...

Easter Raffle

Tickets on sale
from 20th
March
To raise money
for Freshfield
school funds

RAMADAN

11th
March



WORLD
BOOK
DAY

THURS
7th
MARCH
2024

Special Person Day
Mother's Day
10th March 2024



COMIC
RELIEF

RED NOSE DAY

15th
March
2024



Children will encouraged to
wear something red & make a
donation. All money raised will
be donated to Comic Relief.

CURRICULUM EVENING FOR PARENTS & CARERS

5.30pm until 6.30pm
Wednesday 6th March

Tell a fairy
tale week

26th Feb -
1st March

Easter Parade



Pink Fireflies & Yellow Butterflies at
8.30am

Green Caterpillars & Blue Dragonflies at
9.30am

Red Ladybirds & Orange Bumblebees at
10.30am