

# 30 hours Funded Childcare For 3 and 4 year olds

## Information for Parents

30 hours is for working parents. You need to apply for an eligibility code through the childcare service. More details overleaf.

### When can my child access a 30 hours place?

You can claim 30 hours from the term after:

- your child turns three, and
- the date you receive your eligibility code from HMRC.

**Whichever date is later.**

### How do I take up a 30 hours place?

Once you have an eligibility code you should take it to your childcare provider/school to be checked and to reserve your place in good time. Your provider/school must check your code before you take up your 30 hours place.

You can search for childcare providers near you at:  
[www.stockport.gov.uk/childcare](http://www.stockport.gov.uk/childcare)

Further Information:  
[www.stockport.gov.uk/30hours](http://www.stockport.gov.uk/30hours)



Childcare  
**Choices**



**STOCKPORT**  
METROPOLITAN BOROUGH COUNCIL

## Am I Eligible?

You, and any partner, must each expect to earn (on average) the equivalent of working 16 hours a week at your national minimum wage (£125 at the National Living Wage, less if you are on the National Minimum Wage).

If you, or your partner, are on maternity, paternity or adoption leave, or you're unable to work because you are disabled or have caring responsibilities, you could still be eligible.

You can't get 30 hours funded childcare if either you, or your partner, expect to earn £100,000 or more.

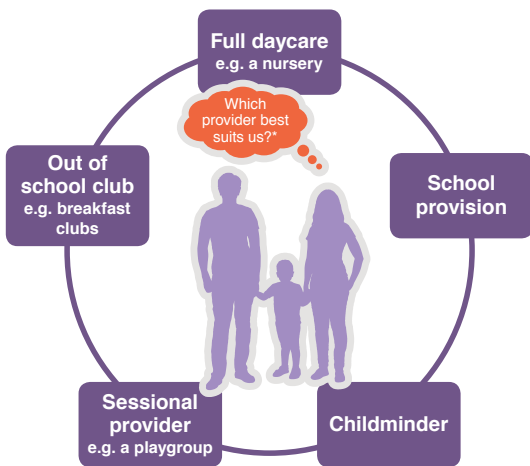
## How do I apply for my eligibility code?

A single online application for 30 Hours Funded Childcare and Tax Free Childcare.

[www.childcarechoices.gov.uk](http://www.childcarechoices.gov.uk)

Tax Free Childcare is a new UK wide government scheme to help working parents with the cost of childcare.

## Where can my child have a place?



Different childcare arrangements work for different families.

- You can take up your 30 hours between 6am-8pm, but no session can be more than 10 hours.
- You don't have to use all 30 hours, just those that meet your needs.
- Providers have a choice whether to offer the hours, some may not offer the full 30 hours.
- You can split your hours between providers but splitting is limited to a maximum of two sites per day. Remember to get your 30 hours code checked by all the providers you use.
- Your provider/school might charge for additional services, for example; lunch, trips or music classes.
- 30 hours is available for 38 weeks of the year (just like the existing 15 hours). Some providers will allow you to 'stretch' your 30 hours entitlement over 52 weeks of the year meaning fewer hours per week (e.g. you could take 22 hours a week for 52 weeks).